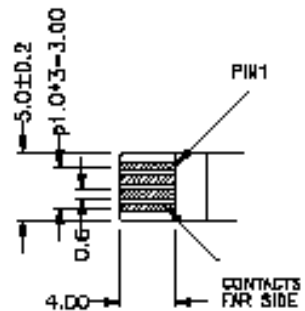
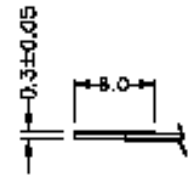


FRONT VIEW

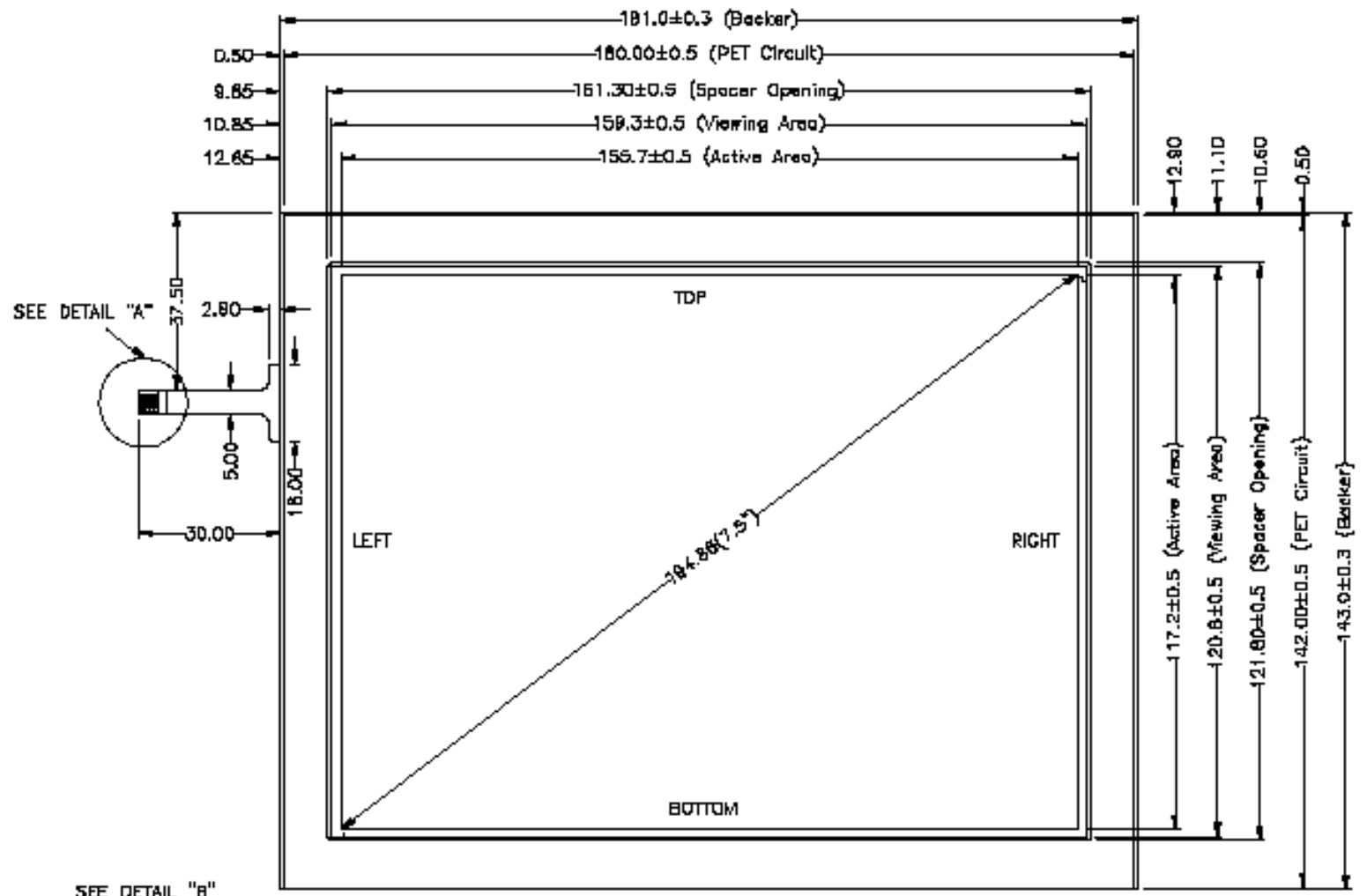
Pin #	Assignment
1	TDP
2	BOTTOM
3	LEFT
4	RIGHT



DETAIL A



DETAIL B



SEE DETAIL "A"



SEE DETAIL "B"

NOTES:

1. ITO GLASS THICKNESS : 1.1mm
2. ITO PET TOP CIRCUIT THICKNESS : 0.2mm
3. SPACER ADHESIVE : 0.1mm
4. OVERALL THICKNESS : 1.40mm ±0.07
5. CONNECTOR AND PINOUT AS INDICATED
6. FRONT SURFACE ANTI GLARE HARD COAT
7. OPTICAL SPECIFICATION : ADD1
8. LAYER TO LAYER ASSEMBLY TOLERANCE: ±0.3mm
9. FPC TAIL

CLEAR-VICTORY TECHNOLOGY CO.,LTD

NO.	DATE	DESCRIPTION	CHK.
REVISION			
DESIGNER		APPROVED	
ENGINEER		FIELD ENGINEER	
DRAWN BY	NAME	DATE	OCT 26, 2001
SHT	DF 1	REV.	

TOLERANCES UNLESS SPECIFIED	
F	± 0.50
M	± 0.50
F	± 0.10
ANGULAR	-

PROJECT NAME : 9515
 DWG NO : 9515-0-01
 SCALE: 1:1 UNIT: mm